



PRODUCT GUIDE 2024



CrollalceCream.co.uk



Contents

Catering Range	1
Parlour Range	3
Speciality Ice Creams	9
Cakes & Desserts	10
Buffet Range	15
Bulk Ice Cream Range	16
Fresh Crolla Mix & Long Life Mix	17
Retail Range	17
Terms of Business	19

Ordering Information

TO ORDER

Contact our Sales Team on **0141 423 1161**.

A member of our Sales Team will be available to answer your call during opening hours. Additionally, for your convenience, we also have an answering service outwith these hours.

Orders can also be placed by emailing orders@crollaicecream.co.uk

Our Factory is open for collections during our opening hours, should you not wish to phone in an order and book a delivery. (We are open to the public and business accounts are not required for collections).

OPENING HOURS

Monday to Friday:	8.00am – 3.30pm
Saturday:	8.00am – 11.45am
Sunday :	Closed

If you wish to contact our Sales Manager email john.morrison@crollaicecream.co.uk or tony@crollaicecream.co.uk

NUT ALLERGY ADVICE

Our products are made in a factory that also handles nuts.



Our History

The Crolla's Story

Crolla's have been making traditional Italian ice cream in Glasgow for over a hundred and twenty five years.

It was 1895 when a young Serafino Crolla exchanged the warm sunshine of Italy for the less predictable climes of Scotland, setting up his first shop in Queen Mary Street, Glasgow.

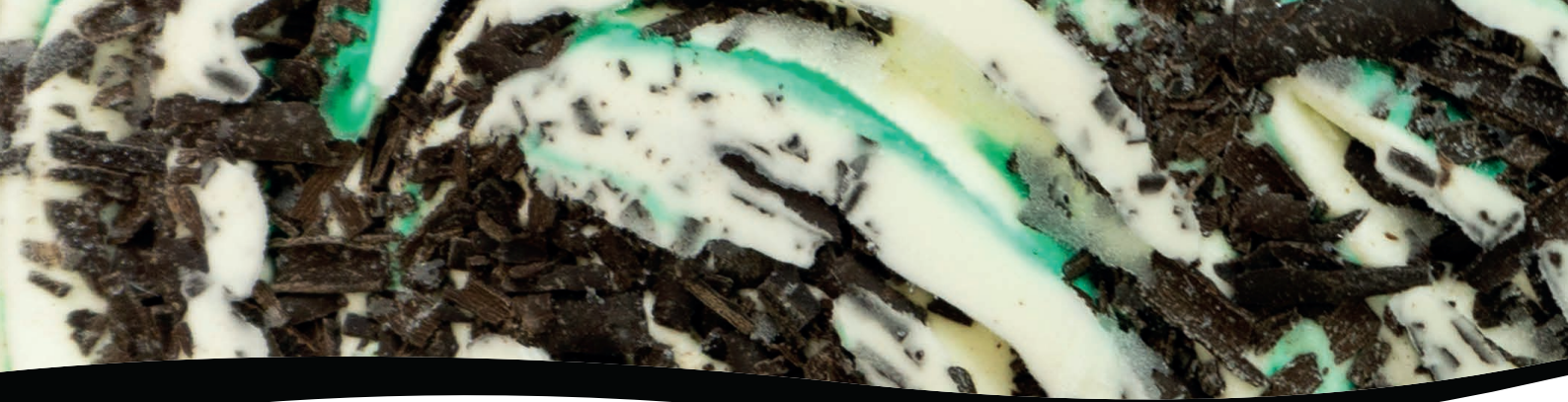
His son, Giuseppe, opened a second shop in Clydebank, and after the first World War he returned to Scotland and opened Premier Café in Main Street, Bridgeton. This was followed by expansion into the two adjoining premises.

By 1950 the family had started up an ice cream factory and had 30 vans selling their delicious ice cream around the streets of Glasgow.

Today the firm still supplies ice cream vans but has expanded to supply shops, cafés, wholesalers, restaurants and hotels and are firmly committed, as ever, to producing top quality ice cream.

Peter Crolla, Serafino's great-great-grandson, has now established the fifth generation of Crolla's - a family firm in the true sense of the word. Together with their customers and staff they look forward to future developments in the history of the Crolla Ice Cream Company.





Catering Range

Code	Product	Litres	Price
Soft Serve			
001	Vanilla	4	£10.82
002	Chocolate	4	£12.39
003	Strawberry	4	£12.39
004	Raspberry Ripple	4	£12.39
025	Cookies & Cream	4	£13.49
027	Horchata	4	£13.18
007	Caramel Shortcake	4	£13.23
008	Mango	4	£13.23
009	Toffee Crunch	4	£13.23
014	Coconut	4	£13.23
015	Honeycomb	4	£13.23
024	Tablet (Scottish)	4	£13.23
018	Dime Bar	4	£13.39
045	Salted Caramel	4	£13.34
011	Rum & Raisin (a)	4	£13.91
017	Mango & Raspberry	4	£13.91
006	Banana	4	£13.91
028	Turkish Delight	4	£14.54
029	Kinder	4	£14.54
016	Mint Chocolate Chip	4	£14.54
013	Chilli Chocolate Chip	4	£14.60
020	Pistachio	4	£14.91
010	Iron Brew	4	£15.02
050	Honeycomb	4	£15.91
047	Nuttella	4	£16.70
019	After Dinner Mint	4	£17.17
022	Nocciola (Hazelnut)	4	£17.33
023	Ferrero	4	£17.33

Code	Product	Litres	Price
Jimmy Gelato (Half Dairy)			
520	Vanilla	4	£7.40
521	Chocolate	4	£8.19
522	Strawberry	4	£8.19
523	Mint Chocolate Chip	4	£9.24
026	Blue Bubblegum	4	£10.29

Code	Product	Litres	Price
Sorbet			
032	Strawberry	2.5	£10.19
038	Forest Fruit (inc Blackcurrant)	2.5	£10.19
060	Pomegranate	2.5	£10.50
036	Champagne	2.5	£10.50
061	Passion Fruit	2.5	£10.19
062	Lemon	2.5	£10.19
063	Orange	2.5	£10.19
064	Raspberry	2.5	£10.19
065	Mango	2.5	£10.19
039	Lemon	4	£12.65
042	Orange	4	£12.65

Code	Product	Litres	Price
Vegan			
VEG 01	Vegan Vanilla	2.5	£8.35
VEG 09	Vegan Chocolate	2.5	£8.51
VEG 02	Vegan Strawberry	2.5	£8.51

Code	Product	Price
Containers		
757	2 Litre	£0.60
756	4 Litre	£0.82
292	2 Litre with lid	£0.80
291	4 Litre with lid	£1.00
298	Silver 4 Litre with lid	£1.20
750	10 Litre with lid	£3.00
755	Lid for 2/4 Litre	£0.30

Code	Product	Units	Price
Decorations			
454	Palms	100	£8.95
455	Umbrellas	144	£6.99
Her03	Italian Flags	100	£2.25

All products listed here are suitable for vegetarians however please note that some may contain alcohol (a).

All products listed here are vatable.





Parlour Range

Code	Product	Litres	Price	Code	Product	Litres	Price
Napoli Trays							
400	Vanilla (Original)	4.75	£12.86	395	Kinder	4.75	£15.91
401	Chocolate	4.75	£14.23	433	Chocolate Orange	4.75	£15.96
402	Strawberry	4.75	£14.23	416	Toffee Fudge	4.75	£16.28
403	Raspberry Ripple	4.75	£14.23	408	Biscoff	4.75	£16.49
394	Vanilla Chocolate Fudge	4.75	£14.23	041	Iron Brew	4.75	£16.85
391	Double Cream Vanilla (New)	4.75	£15.02	405	Blue Moon	4.75	£16.85
412	Coconut (real coconut)	4.75	£15.17	389	Bubblegum Swirl	4.75	£16.85
418	Toffee Crunch	4.75	£15.17	438	Curly Wurly	4.75	£16.85
393	Strawberry Ripple	4.75	£15.12	435	Sparkling Cotton Candy	4.75	£16.85
420	Honeycombe	4.75	£15.17	389	Fruit Salad	4.75	£16.85
426	Vanilla Toffee Ribonette	4.75	£15.17	392	Pistachio	4.75	£18.17
406	Chocolate Fudge Brownie	4.75	£15.12	437	Nuttella	4.75	£17.01
380	Cookies & Cream	4.75	£15.59	431	Cookie Monster	4.75	£17.54
381	Dime Bar	4.75	£15.59	385	White Chocolate Twix	4.75	£18.11
383	Kola Cube	4.75	£15.59	436	Twix	4.75	£18.11
384	White Chocolate	4.75	£15.59	429	Galaxy Caramel	4.75	£18.17
404	Banoffi	4.75	£15.59	434	Salted Caramel	4.75	£18.48
415	Blue Bubblegum	4.75	£15.59	439	Maltesers	4.75	£18.74
417	Smarty	4.75	£15.59	441	Cherry Mania	4.75	£18.74
421	Chocolate Chip	4.75	£15.59	480	Tango Ice Blast R&B	4.75	£18.74
423	Banana	4.75	£15.59	386	Snickers	4.75	£18.74
424	Turkish Delight	4.75	£15.59	396	Red Velvet	4.75	£18.74
427	Strawberry Cheesecake	4.75	£15.59	407	After Dinner Mint	4.75	£18.74
398	Krunchie	4.75	£15.59	432	Ferrero	4.75	£18.74
409	Mango	4.75	£15.59	428	Cookie Dough	4.75	£18.74
410	Mint Chocolate Chip	4.75	£15.59	387	Baileys	4.75	£19.37
411	Rum & Raisin (a)	4.75	£15.59	388	Cream Egg	4.75	£20.42
390	Mango & Raspberry	4.75	£15.59				
430	Bounty	4.75	£15.75				
442	Mint Oreo	4.75	£15.75				
414	Tablet (Scottish)	4.75	£15.91				
399	Caramel Shortcake	4.75	£15.91				
413	Macaroon	4.75	£15.91				

All products listed here are suitable for vegetarians however please note that some may contain alcohol (a).

All products listed here are vatable.



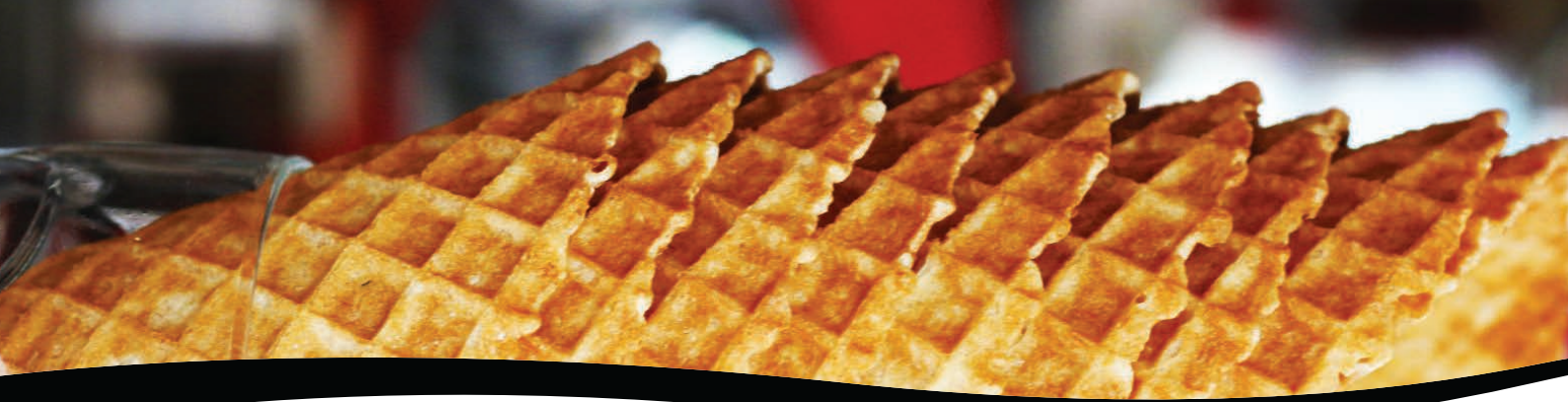


Popular with Parlours

Code	Product	Units/Kg	Price
Waffles and Crepes			
135	Belgian Waffles	30	£12.50
Bako05	Waffle Mix	12.5KG	£40.50
Fra100	Crepe Mix	3KG	£9.00
Puddings			
Sid003	Chocolate Fudge Brownie (GF) (v)	12	£16.90
Sid159	IND Sticky Toffee Pudding (v)	12	£16.50
Ald 01	Crollas Fudge Brownie Slab	108	£44.60
Cookie Dough			
Bako02	Double Chocolate Cookie Pucks	90	£29.00
Bako03	Milk Chocolate Cookie Pucks	90	£27.50
Bako04	White Chocolate Cookie Pucks	90	£27.50
Bako06	Milk Chocolate Cookie Dough (Bucket)	5KG	£26.00
Cro 36	Crolla Milk Puck Cookie Dough	90	£25.00
Cro 37	Crolla White Puck Cookie Dough	90	£25.00
TUB 02	Red Velvet	45	£25.00
TUB 05	Chocolate Orange	45	£25.00
Churros			
141	Churro Sticks	2 x 2KG	£10.66
146	Chocolate Churros	1.4KG	£11.75
147	Caramel Churros	1.4KG	£11.75
149	Ringed Churros (Garcia)	5KG	£39.99
Donuts			
Bako08	Plain Donut Rings	72	£26.50

Items marked (v) are suitable for vegetarians.
All products listed here are vatable.





Tubs & Packaging *

Code	Product	Units	Price
Tubs			
794	8B 100ml Waxed Fruit Cup	100	£5.00
793	10MG 160ml Waxed Fruit Cup	100	£6.00
789	M2 230ml Waxed Fruit Cup	100	£7.60
798	M3 260ml Waxed Fruit Cup	100	£8.00
781	M4 500ml Waxed Fruit Cup	100	£11.00
226	High Ball Containers	80	£4.50
291	Containers 4 Lt with Lids	1	£1.00
292	Containers 2 Lt with Lids	1	£0.90
293	Containers 1 Lt with Lids	252	£137.50
294	Containers 1/2 Lt with Lids 100	100	£32.00
565	8oz Cups Clear	100	£2.20

Lids for Tubs

799	Lid for 8B 100ml	100	£3.50
796	Lid for 10MG 160ml	100	£6.10
797	Lid for M2/M3 230/260ml	100	£6.10
780	Lid for M4 500ml	100	£7.75

Packaging

270	Greaseproof Paper Small	Pack	£7.50
271	Greaseproof Paper Large	Pack	£7.50
Fra115	Pink Sweet Box (7")	90	£14.00

Spoons

269	Spoons Small Bio	1KG	£11.00
TAS01	Large Sundae Spoons	1KG	£12.50

Cones & Wafers

Code	Product	Units	Price
Traditional Cones			
214	Teddy Bear Cone	175	£13.15
253	Cone Twin Top	189	£14.85
252	Cone Giant Red Fiesta	360	£18.03
251	Medium Flare Top	525	£20.09

Waffle Cones

WAV 03	Small Waffle Cone	234	£35.95
WAV 01	Medium Waffle Cone	195	£42.80
WAV 06	Large Waffle Cone	189	£44.95
WAV 08	Tall Waffle Cone	200	£30.50
PER04	Medium Waffle Cone	144	£26.00

Chocolate Dipped Cones *

Cat 16	Sprinkled Waffle Cone	90	£42.85
Cat 08	Bubblegum Waffle Cone	90	£42.85
Cat 09	Salted Caramel Dipped Cone	90	£44.95
WAV 02	Small Chocolate Waffle Cone	132	£39.50
WAV 04	Medium Chocolate Waffle Cone	110	£46.00
WAV 07	Tall Chocolate Waffle Cone	168	£61.00

Wafers

250	Plain Wafers	660	£15.45
Flor01	Fan Wafers Florentine	400	£20.25
248	Teddy Bear Wafers	400	£25.25
ROSSI	Rossini Curls	280	£24.50
256	Nougats	60	£20.54
258	Oysters	36	£17.46
242	Retail Oysters	6	£4.00
234	Waffle Baskets	74	£32.50



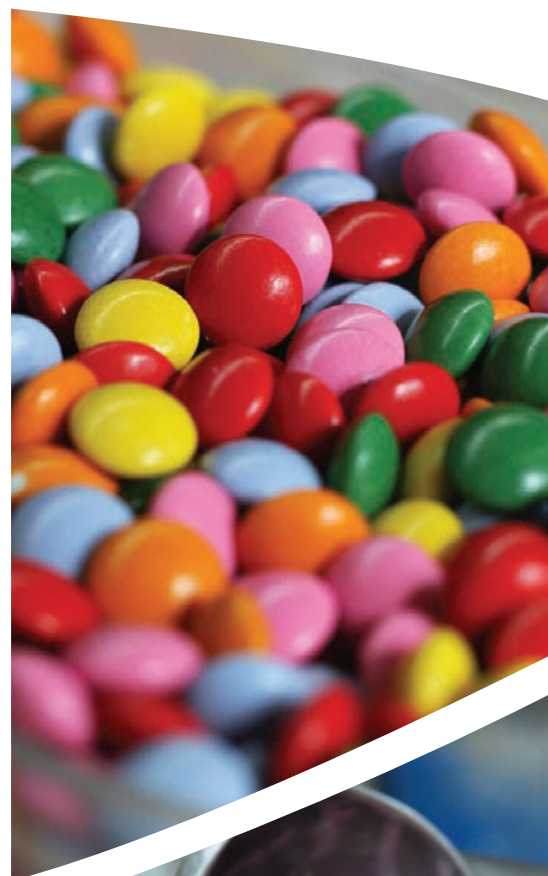


Toppings

Code	Product	Units/Kg	Price
243	Milk Chocolate Buttons *	5KG	£23.00
241	Coloured Sugar Strands	1KG	£7.00
260	Light Vermicelli	1KG	£6.00
257	Smarties *	3KG	£20.00
467	Tablet Squares	1KG	£6.20
450	Nibbed Nuts (Peanuts) *	2KG	£12.25
440	Honeycomb Pieces *	1KG	£9.00
272	Snowballs Tunnocks	36	£7.25
273	Real Chocolate Chips *	1KG	£7.25
477	Micro Marshmallows *	1KG	£6.50
1030	Milk Chocolate Shavings *	3KG	£35.00
1031	Dark Chocolate Shavings *	3KG	£33.50
HB 12	White Chocolate Shavings *	3KG	£36.00
443	Fudge Pieces *	1KG	£13.60
452	Toffee Pieces *	1KG	£18.35
189	Mini Meringues *	1KG	£15.10
HB 25	White Blossom Curls *	1KG	£14.50
HB 26	Milk Blossom Curls *	1KG	£14.50
HB 41	Caramel Curls *	1KG	£16.00
HB 50	Milk Blossoms Curls	4KG	£39.00
HB 51	White Blossom Curls *	4KG	£39.00
233	Mini Smarties *	2.5KG	£30.00
464	Oreo Pieces *	1KG	£13.50
275	Lessiters Chocolate Flakes *	140	£14.25
254	Fudgery Do Fingers *	144	£28.50

Items marked (v) are suitable for vegetarians.

All products marked * are vatable.





Sauces

Code	Product	Units	Price
196	Bubblegum Topping Syrup	625g	£2.95
262	Toffee Topping Syrup	625g	£2.95
263	Chocolate Topping Syrup	625g	£2.95
264	Strawberry Topping Syrup	625g	£2.95
265	Raspberry Topping Syrup	625g	£2.95
267	Lime Topping Syrup	625g	£2.95
247	Raspberry Syrup	12	£15.55
NIC 07	Sparkling Unicorn	500g	£5.65
NIC 08	Cookie Dough	500g	£5.70
SKU011	Tasty Mint Sauce	625g	£2.75
SKU012	Chocolate & Orange Sauce	625g	£2.75
SKU013	Salted Caramel Sauce	625g	£2.75

Joy Gelato

HB 02	Joy Caramel Topping Sauce	1KG	£8.30
HB 03	Joy Chocolate Topping Sauce	1KG	£9.00
HB 04	Joy Strawberry Topping Sauce	1KG	£8.40
HB 14	Joy Mango Topping Sauce	1KG	£9.80
HB 15	Joy Raspberry Topping Sauce	1KG	£9.70
HB 24	Crolla WHITE Sauce	1KG	£9.00
HB 42	Crolla (KINDER) Sauce	1KG	£9.00
Fran44	Fabri Mint Topping Sauce	1KG	£13.00
Mar-05	Hot Chocolate Fudge Sauce	3KG	£22.85
Fran08	Noccialata Ice	5KG	£43.00

Lotus Biscoff

Lot 01	Biscoff Topping Sauce	1KG	£7.55
Lot 02	Biscoff Spread	1.6KG	£8.50
Lot 03	Biscoff Crumb	750g	£4.05

Cherries

Tosc08	Toschi Amarena Cherries	1KG	£12.50
--------	-------------------------	-----	--------

6kg Range

Code	Product	Kg	Price
444	Toffee Sauce	6KG	£17.99
447	Raspberry Sauce	6KG	£17.99
448	Bubblegum Sauce	6KG	£17.99
449	Strawberry Sauce	6KG	£17.99
459	Chocolate Sauce	6KG	£17.99
268	Raspberry Syrup (Real)	6KG	£15.75
SKU001	Salted Caramel	6KG	£15.99
SKU003	Tasty Mint	6KG	£15.99

NIC

NIC 03	NIC Toffee Sauce	1.2KG	£9.95
NIC 04	NIC Salted Caramel Sauce	1.2KG	£10.50

Slush

Simp06	Crolla's Iron Brew	5Lt	£16.99
Simp07	Crolla's Dark Cola	5Lt	£15.99
Simp08	Crolla's Energy	5Lt	£16.99
Simp43	Crolla's Purple Grape	5Lt	£17.99
Simp73	Crolla's Green Sour Apple	5Lt	£16.99
Simp76	Crolla's Red Strawberry	5Lt	£16.99
Simp77	Crolla's Blue Raspberry	5Lt	£16.99
Simp78	Crolla's Kola Cube	5Lt	£16.99
Simp79	Crolla's Pink Bubblegum	5Lt	£14.99
Simp57	Slush Base Mix	5Lt	£17.50

5KG Topping Sauces

TUB 07	Nutella	5KG	£35.00
TUB 08	Belgian Milk	5KG	£35.00
TUB 09	White Chocolate	5KG	£35.00
TUB 10	Bueno	5KG	£35.00



Milkshake

Code	Product	Units	Price
TOSC01	Banana	1Ltr	£11.20
TOSC02	Chocolate	1Ltr	£11.20
TOSC03	Coconut	1Ltr	£11.20
TOSC04	Hazelnut	1Ltr	£11.20
TOSC05	Mango	1Ltr	£11.20
TOSC06	Mint	1Ltr	£11.20
TOSC10	Raspberry	1Ltr	£11.20
TOSC11	Strawberry	1Ltr	£11.20
TOSC12	Vanilla	1Ltr	£11.20
TOSC15	Caramel	1Ltr	£11.20

Cup Holders

HER10	2 CUP CARRIER	360	£20.00
HER11	4 CUP CARRIER	180	£20.00

Cups & Straws *

Code	Product	Units	Price
Sol12	12oz Clear Cup	50	£3.99
Sol16	16oz Clear Cup	50	£4.00
569	20oz Clear Cup	50	£4.85
Sol12d	Lids for 12oz Dome	100	£3.50
Sol16d	Lids for 12, 16, 20oz Dome	100	£3.75
478	Paper Straws 10mm	200	£5.00

New Cone Dispensers

Small	£95.00
Large	£115.00

All products marked * are vatable.

Cups & Straws *

Code	Product	Units	Price
Sol12	12oz Clear Cup	50	£3.99
Sol16	16oz Clear Cup	50	£4.00
569	20oz Clear Cup	50	£4.85
Sol12d	Lids for 12oz Dome	100	£3.50
Sol16d	Lids for 12,16,20oz Dome	100	£3.75
478	Paper Straws 10mm	200	£5.00
HER06	Jumbo Paper Straws 12mm	250	£5.50
HER07	Slush Small Paper Straws 8mm	500	£7.00

Scoops & Utensils *

295	Size 20 Ice Cream Scoops	£25.00
296	Size 30 Ice Cream Scoops	£25.00
301	Eutectic Scoops Size 20	£19.00
302	Eutectic Scoops Size 30	£19.00
303	Plastic Handled Size 20 Scoop	£23.00
304	Plastic Handled Size 30 Scoop	£22.00
287	Ice Cream Spatula	£9.00
555	Sterilising Powder	£6.60





Specialty Ice Creams

Freezer to table

Simplicity. Just straight from the freezer to your customer's table.



Code: 113
Chocolate Sundae

8 Units £9.71
Ind. Price £1.21



Code: 114
Strawberry Sundae

8 Units £9.71
Ind. Price £1.21



Code: 076
Caprizzo Bianco

12 Units £13.65
Ind. Price £1.14



Code: 118
Strawberry Cheesecake

8 Units £11.66
Ind. Price £1.46



Code: 066
White Chocolate/ Caramel Truffle

8 Units £11.66
Ind. Price £1.46



Code: 074
Tartufo Chocolate

12 Units £16.10
Ind. Price £1.34



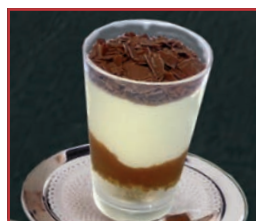
Code: 075
Tartufo Mint

12 Units £16.10
Ind. Price £1.34



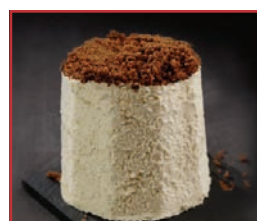
Code: 117
After Dinner Mint

8 Units £12.76
Ind. Price £1.60



Code: 115
Caramel Shortcake

8 Units £13.44
Ind. Price £1.68



Code: 714
Semifreddo Torroncino

12 Units £19.45
Ind. Price £1.62



Code: 108
Coconut Surprise

8 Units £14.65
Ind. Price £1.83



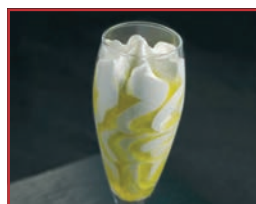
Code: 641
Fantastica

6 Units £11.25
Ind. Price £1.88



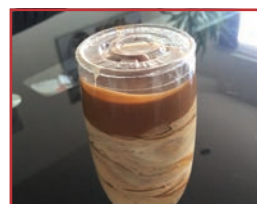
Code: 731
Cassata Bindi

16 Units £30.50
Ind. Price £1.91



Code: 102
Limoncello Flute

8 Units £16.00
Ind. Price £2.00



Code: 103
Salted Caramel Flute

8 Units £14.50
Ind. Price £1.81



Code: 734
Tartufo Classico
12 Units £22.00
Ind. Price £1.83



Code: 081
Coppa Mango
8 Units £15.25
Ind. Price £1.91



Code: 088
Toffee Twilight (Glass)
8 Units £15.25
Ind. Price £1.91



Code: 089
Strawberry Flute (Glass)
8 Units £15.25
Ind. Price £1.91



Code: 056
Coppa Fruta Del Bosque
8 Units £15.25
Ind. Price £1.91



Code: 644
Cookies & Cream
8 Units £16.75
Ind. Price £2.09



Code: 059
Coppa Chocolate Mousse
6 Units £13.50
Ind. Price £2.25



Code: 096
Snowflake
8 Units £19.50
Ind. Price £2.44



Code: 097
Ferrero Rochella (Glass)
8 Units £19.50
Ind. Price £2.44

All products listed here are vatable.

Ask a member of our team about our free dessert menus.





Real Fruit Skins



Code: 100
Orange Givres
6 Units £11.75
Ind. Price £1.96



Code: 101
Lemon Givres
6 Units £11.75
Ind. Price £1.96



Code: 109
Coconut Shells
8 Units £17.99
Ind. Price £2.25

Indian Desserts



Code: 080
Malai Kulfi
12 Units £11.24
Ind. Price £0.94



Code: 083
Mango Kulfi
12 Units £11.24
Ind. Price £0.94



Code: 084
Pistachio Kulfi
12 Units £11.24
Ind. Price £0.94

Childrens' Desserts



Code: 638
Punky
12 Units £19.99
Ind. Price £1.67



Code: 639
Kuaky (Chocolate)
12 Units £18.50
Ind. Price £1.54



Code: 636
Vacky
12 Units £19.90
Ind. Price £1.66



Code: 637
Friky (Strawberry)
12 Units £17.50
Ind. Price £1.46



Code: 645
Leo the Lion
12 Units £20.60
Ind. Price £1.72

All products listed here are vatable.



Cakes & Desserts

Gateaux and Pies

Code	Product	Portions	Price
183	Apple Pie	14	£12.95
160	Lemon Mallow Pie	14	£11.25
sid662	Caramel Granny Apple (v)	12	£16.50
142	Chocolate Fudge Cake (v)	16	£18.50
sid152	Carrot Cake (v)	14	£19.00
sid177	Dime Bar Cake	14	£19.75
145	Red Velvet Fudge Cake	12	£22.50
684	Tiramisu Tondo	12	£16.65
154	Red Velvet Chocolate Cake	14	£22.50
Hill 01	Black Forest Gateau	16	£8.70

Tray Bakes & Pudding

Code	Product	Units	Price
310	Caramel Shortcake Squares	24	£13.25
311	White Chocolate Caramel Squares	24	£13.85
sid003	GF Chocolate Brownie (v)	12	£16.90
744	Profiterole Scuro Bianco	12	£15.50
747	Profiterole Scuro	12	£15.50
sid159	Sticky Toffee Pudding (v)	12	£16.50
158	Sticky Toffee Squares (v)	16	£17.05
ald01	Crolla Chocolate Fudge Brownie Slab	108	£44.60
683	Tiramisu Dish	12	£13.85

Vegan

Code	Product	Units	Price
VEG 04	Vegan Salted Caramel Brownie	30	£22.50
VEG 03	Vegan Mango & Coconut	24	£29.99



Cheesecake

Code	Product	Portions	Price
sid176	New York Cheesecake (gf)(v)	12	£20.50
151	Belgian Chocolate Cheesecake	14	£21.25
154	Red Velvet Cheesecake	14	£22.50
153	Millionaires Cheesecake	14	£20.50
WIN 32	White Chocolate & Strawberry Cheesecake	16	£23.75
Non 01	Lotus Biscoff Cheesecake	12	£21.50
Non 05	Cookies & Cream Cheesecake	12	£21.50
Non 14	Kinder Cheesecake	12	£21.50
Non 15	Ferrero Cheesecake	12	£21.50
Non 16	Nutella Cheesecake	12	£21.50

All products marked (v) are suitable for vegetarians.

All products marked (gf) are gluten free.

All products are VAT free.

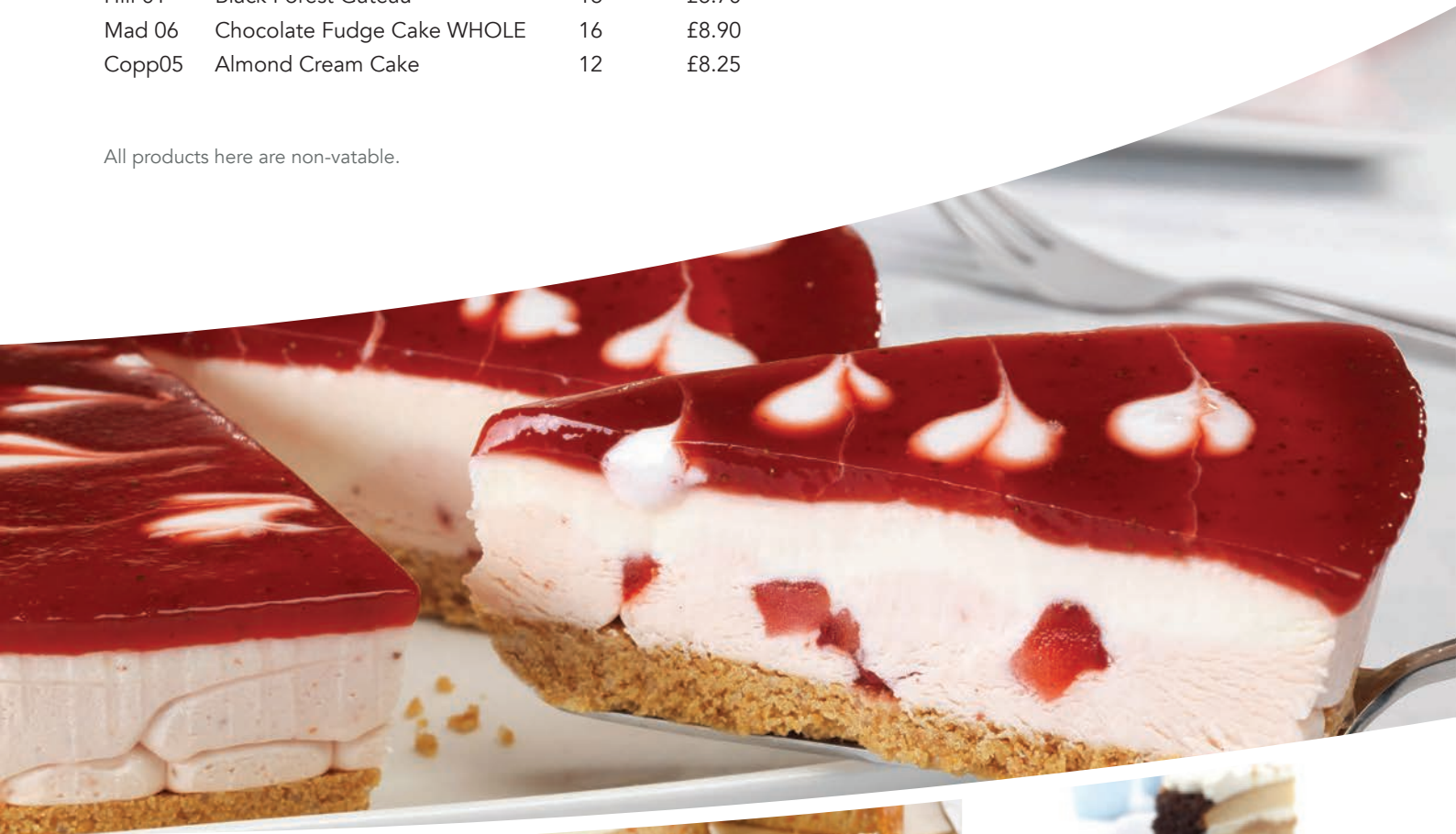




Buffet Range

Code	Product	Portions	Price
138	Apple Crumble (v)	14	£8.50
Copp10	Mandarin Cheesecake	14	£8.85
Copp11	Strawberry Cheesecake	14	£8.85
185	Double Chocolate Gateau (v)	18	£8.60
186	Banoffee Gateau (v)	18	£8.50
Hill 02	Profiteroles with Chocolate Sauce	5x374g	£19.90
Hill 01	Black Forest Gateau	16	£8.70
Mad 06	Chocolate Fudge Cake WHOLE	16	£8.90
Copp05	Almond Cream Cake	12	£8.25

All products here are non-vatable.





Bulk Ice Cream Range

Code	Product	Litres	Price
Dairy Bulk			
354	10 Litre (Dairy Ice Cream) (v)	10	£25.78
351	13 Litre (Dairy Ice Cream (3.5gal) (v)	13	£33.23
Half Dairy Bulk			
809	13 Litre (Half Dairy Ice Cream) (v)	13	£22.84
801	22.75 Litre (Half Dairy Ice Cream) (v)	22.75	£39.90
10 Litre			
357	Vanilla (Half Dairy Ice Cream) (v)	10	£17.59
931	Strawberry (Half Dairy Ice Cream) (v)	10	£19.27
932	Chocolate (Half Dairy Ice Cream) (v)	10	£19.27
935	Raspberry Ripple (Half Dairy Ice Cream) (v)	10	£19.27
936	Blue Bubblegum (Half Dairy Ice Cream) (v)	10	£19.27
940	Banana (Half Dairy Ice Cream) (v)	10	£22.26
938	Iron Brew (Half Dairy Ice Cream) (v)	10	£22.26
930	Mint Chip (Half Dairy Ice Cream) (v)	10	£22.26

All products marked (v) are suitable for vegetarians.

All products here are vatable.





Fresh Crolla Mix & Long Life Mix

Code	Product	Litres	Price	Code	Product	Litres	Price
Fresh				Cafe Dairy UHT			
600	Mix Dairy Store from 1C to 6C	4.55	£12.44	612	1 Litre Crolla Dairy UHT Mix	12x1Lt	£POA
Non Dairy UHT				650	5 Litre Crolla Dairy UHT Mix	1x5Lt	£POA
711	Mr Sunshine Creamy UHT Mix	12x1Lt	£POA	651	10 Litre Crolla Dairy UHT Mix	1x10Lt	£POA

Retail Range

Code	Product	Case Cost	Ind.	RRP	Code	Product	Case	Ind. Cost	RRP
500ml					Spoon in the Lid				
370	Vanilla	6x500ml (£11.03)	£1.84	£3.40	374	Vanilla	12x120ml (£9.24)	£0.77	£1.40
371	Raspberry Ripple	6x500ml (£12.39)	£2.07	£3.70	375	Mint Choc Chip	12x120ml (£9.24)	£0.77	£1.40
367	Sticky Toffee Ripple	6x500ml (£12.39)	£2.07	£3.70	378	Raspberry Ripple	12x120ml (£9.24)	£0.77	£1.40
368	Strawberry Cheesecake	6x500ml (£12.39)	£2.07	£3.70	379	Chocolate Fudge Ripple	12x120ml (£9.24)	£0.77	£1.40
369	Chocolate Fudge Brownie	6x500ml (£12.39)	£2.07	£3.70	353	Cheeky Monkey	12x120ml (£9.24)	£0.77	£1.40
832	Mint Choc Chip	6x500ml (£12.39)	£2.07	£3.70	355	Caramel Shortcake	12x120ml	£0.77	£1.40
833	Cookies & Cream	6x500ml (£12.39)	£2.07	£3.70					

All products marked (v) are suitable for vegetarians.

All products here are vatable.





Code	Product	Case	Ind. Cost	RRP
------	---------	------	-----------	-----

Jimmy Gelato Retail

510	Jimmy Gelato 1/2 Lt Vanilla	6x500ml (£7.67)	£1.28	£2.31
511	Jimmy Gelato 1/2 Lt Rasp/Ripple	6x500ml (£7.67)	£1.28	£2.31
500	Jimmy Gelato 1 Lt Vanilla	3x1lt (£5.78)	£1.93	£2.99
501	Jimmy Gelato 1 Lt Rasp/Ripple	3x1lt (£5.78)	£1.93	£2.99

Traditional Vanilla

373	Kiddicups (110ml) Vanilla	24x110ml (£12.34)	£0.51	£0.95
372	Vanilla 238ml Dairy	12x238ml (£12.29)	£1.02	£1.73
362	Vanilla 1 Litre Dairy	3x 1 litre (£9.03)	£3.01	£4.94
361	Vanilla 2 Litre Dairy Bulk	1x2 Litre (£6.09)		

Code	Product	Units	Cost	Ind. Cost
------	---------	-------	------	-----------

Ice Lollies

336	Super Cola	36	£10.45	£0.29
339	Bubblegum	36	£10.45	£0.29
335	Apple Cider	24	£9.20	£0.38
337	Fizzy Lemonade	24	£9.00	£0.38
350	Orange Juice Bar	24	£10.50	£0.44
340	Wazaa	24	£11.50	£0.48
343	Strawberry Split	24	£10.85	£0.45
345	Bubblegum & Strawberry	24	£10.00	£0.42
349	Chico Clown Push Up	24	£17.25	£0.72
338	Blue Raspberry	24	£15.00	£0.63
344	KBG Mint	12	£13.85	£1.15
347	KBG Chocolate	12	£13.85	£1.15
342	KBG Bubblegum	12	£14.00	£1.17
348	KBG Strawberry	12	£13.60	£1.13

All products are suitable for vegetarians.

All products here are vatable.





Terms of Business

The published prices are correct at the time of printing but may alter without notice. VAT will be charged at the standard rate where applicable.

PAYMENT

All products are sold as cash on delivery unless a credit agreement has been established. Credit terms are monthly. Failure to comply with these terms could result in no further deliveries and, in extreme cases, legal action.

ORDERS

Within our delivery catchment area there will be no minimum order required for delivery. However if you require a delivery outwith our delivery area a minimum order may be applicable. (Please call to find out our delivery areas).

DAMAGES AND SHORTAGES

Any damages or shortages must be notified to us within 24 hours of delivery. Please note that Credits or replacements will not be given until our Quality Control Department has inspected the returned goods.

AVAILABILITY

All products are subject to availability. Although we stock everything that is on this price list sometimes circumstances beyond our control may cause shortages.

The Crolla Ice Cream Company Ltd

Address: 48 Jessie Street
Polmadie, Glasgow
G42 0PG
Telephone: 0141 423 1161
Fax: 0141 423 2596
Email: sales@crollaicecream.co.uk
Website: www.crollaicecream.co.uk

If you have any dietary requirements or concerns regarding allergens, please do not hesitate to ask a member of our team.







CrollalceCream.co.uk