



PRODUCT GUIDE 2023



CrollalceCream.co.uk



Contents

Catering Range	1
Parlour Range	3
Speciality Ice Creams	9
Cakes & Desserts	10
Buffet Range	15
Bulk Ice Cream Range	16
Fresh Crolla Mix & Long Life Mix	17
Retail Range	17
Terms of Business	19

Ordering Information

TO ORDER

Contact our Sales Team on **0141 423 1161**.

A member of our Sales Team will be available to answer your call during opening hours. Additionally, for your convenience, we also have an answering service outwith these hours.

Orders can also be placed by emailing orders@crollaicecream.co.uk

Our Factory is open for collections during our opening hours, should you not wish to phone in an order and book a delivery. (We are open to the public and business accounts are not required for collections).

OPENING HOURS

Monday to Friday: 8.00am – 3.30pm
Saturday: 8.00am – 11.45am
Sunday : Closed

If you wish to contact our Sales Manager email john.morrison@crollaicecream.co.uk or tony@crollaicecream.co.uk

NUT ALLERGY ADVICE

Our products are made in a factory that also handles nuts.



Our History

The Crolla's Story

Crolla's have been making traditional Italian ice cream in Glasgow for over a hundred and twenty five years.

It was 1895 when a young Serafino Crolla exchanged the warm sunshine of Italy for the less predictable climes of Scotland, setting up his first shop in Queen Mary Street, Glasgow.

His son, Giuseppe, opened a second shop in Clydebank, and after the first World War he returned to Scotland and opened Premier Café in Main Street, Bridgeton. This was followed by expansion into the two adjoining premises. By 1950 the family had started up an ice cream factory and had 30 vans selling their delicious ice cream around the streets of Glasgow.

Today the firm still supplies ice cream vans but has expanded to supply shops, cafés, wholesalers, restaurants and hotels and are firmly committed, as ever, to producing top quality ice cream.

Peter Crolla, Serafino's great-great-grandson, has now established the fifth generation of Crolla's - a family firm in the true sense of the word. Together with their customers and staff they look forward to future developments in the history of the Crolla Ice Cream Company.





Catering Range

Code	Product	Litres
------	---------	--------

Soft Serve

001	Vanilla	4
002	Chocolate	4
003	Strawberry	4
004	Raspberry Ripple	4
025	Cookies Cream	4
027	Horchata	4
007	Caramel Shortcake	4
008	Mango	4
009	Toffee Crunch	4
014	Coconut	4
015	Honeycomb	4
024	Tablet (Scottish)	4
018	Dime Bar	4
045	Salted Caramel	4
011	Rum & Raisin (a)	4
017	Mango & Raspberry	4
006	Banana	4
028	Turkish Delight	4
029	Kinder	4
016	Mint Chocolate Chip	4
013	Chilli Chocolate Chip	4
020	Pistachio	4
010	Iron Brew	4
050	Honeycomb	4
047	Nuttella	4
019	After Dinner Mint	4
022	Nocciola (Hazelnut)	4
023	Ferrero	4

Code	Product	Litres
------	---------	--------

Jimmy Gelato (Half Dairy)

520	Vanilla	4
521	Chocolate	4
522	Strawberry	4
523	Mint Chocolate Chip	4
026	Blue Bubblegum	4

Code	Product	Litres
------	---------	--------

Sorbet

032	Strawberry	2.5
038	Forest Fruit (inc Blackcurrant)	2.5
060	Pomegranate	2.5
036	Champagne	2.5
061	Passion Fruit	2.5
062	Lemon	2.5
063	Orange	2.5
064	Raspberry	2.5
065	Mango	2.5
039	Lemon	4
042	Orange	4

Code	Product	Litres
------	---------	--------

Vegan

VEG 01	Vanilla	2.5
VEG 09	Vegan Chocolate	2.5
VEG 02	Vegan Strawberry	2.5

Code	Product
------	---------

Containers

757	2 Litre
756	4 Litre
292	2 Litre with lid
291	4 Litre with lid
298	Silver 4 Litre with lid
750	10 Litre with lid
755	Lid for 2/4 Litre

Code	Product	Units
------	---------	-------

Decorations

454	Palms	100
455	Umbrellas	144
Her03	Italian Flags	100

All products listed here are suitable for vegetarians however please note that some may contain alcohol (a).

All products listed here are vatable.





Parlour Range

Code Product Litres

Napoli Trays

400	Vanilla	4.5
401	Chocolate	4.5
402	Strawberry	4.5
403	Raspberry Ripple	4.5
394	Vanilla Chocolate Fudge	4.5
391	Double Cream Vanilla (New)	4.5
412	Coconut (real coconut)	4.5
418	Toffee Crunch	4.5
393	Strawberry Ripple	4.5
420	Honeycomb	4.5
426	Vanilla Toffee Ribonette	4.5
406	Chocolate Fudge Brownie	4.5
380	Cookies & Cream	4.5
381	Dime Bar	4.5
383	Kola Cube	4.5
384	White Chocolate	4.5
404	Banoffi	4.5
415	Blue Bubblegum	4.5
417	Smarty	4.5
421	Chocolate Chip	4.5
423	Banana	4.5
424	Turkish Delight	4.5
427	Strawberry Cheesecake	4.5
398	Krunchie	4.5
409	Mango	4.5
410	Mint Chocolate Chip	4.5
411	Rum & Raisin (a)	4.5
390	Mango & Raspberry	4.5
414	Tablet (Scottish)	4.5
399	Caramel Shortcake	4.5
413	Macaroon	4.5
395	Kinder	4.5
416	Toffee Fudge	4.5

Code Product Litres

408	Biscoff	4.5
041	Iron Brew	4.5
405	Blue Moon	4.5
389	Bubblegum Swirl	4.5
438	Curly Wurly	4.5
435	Sparkling Cotton Candy	4.5
389	Fruit Salad	4.5
392	Pistachio	4.5
437	Nuttella	4.5
431	Cookie Monster	4.5
385	White Chocolate Twix	4.5
436	Twix	4.5
429	Crollo	4.5
434	Salted Caramel	4.5
439	Maltesers	4.5
441	Cherry Mania	4.5
480	Tango Ice Blast R&B	4.5
386	Chocolate & Peanut	4.5
396	Red Velvet	4.5
407	After Dinner Mint	4.5
432	Ferrero	4.5
428	Cookie Dough	4.5
387	Baileys	4.5
425	Toffee Crisp	4.5
388	Cream Egg	4.5
419	Popcorn	4.5

All products listed here are suitable for vegetarians however please note that some may contain alcohol (a).

All products listed here are vatable.

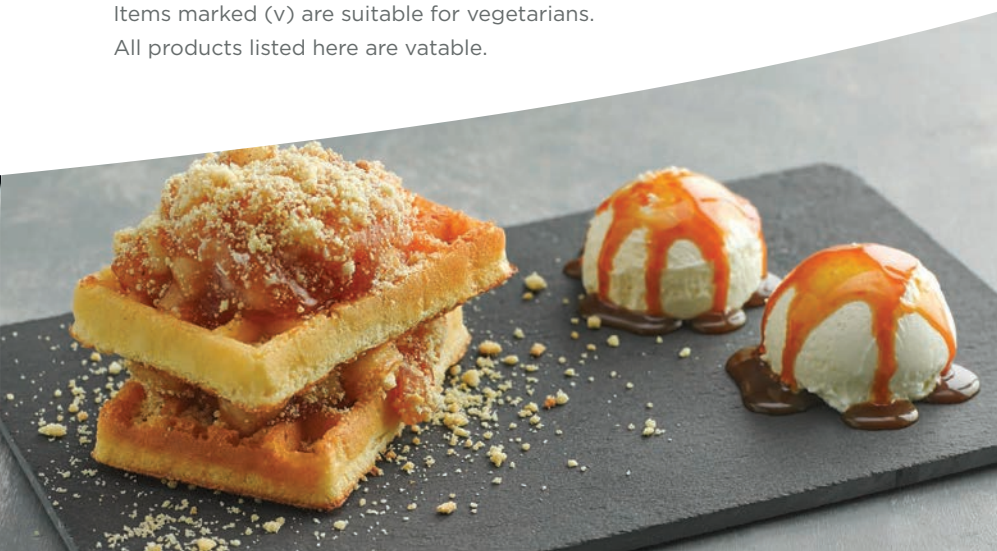


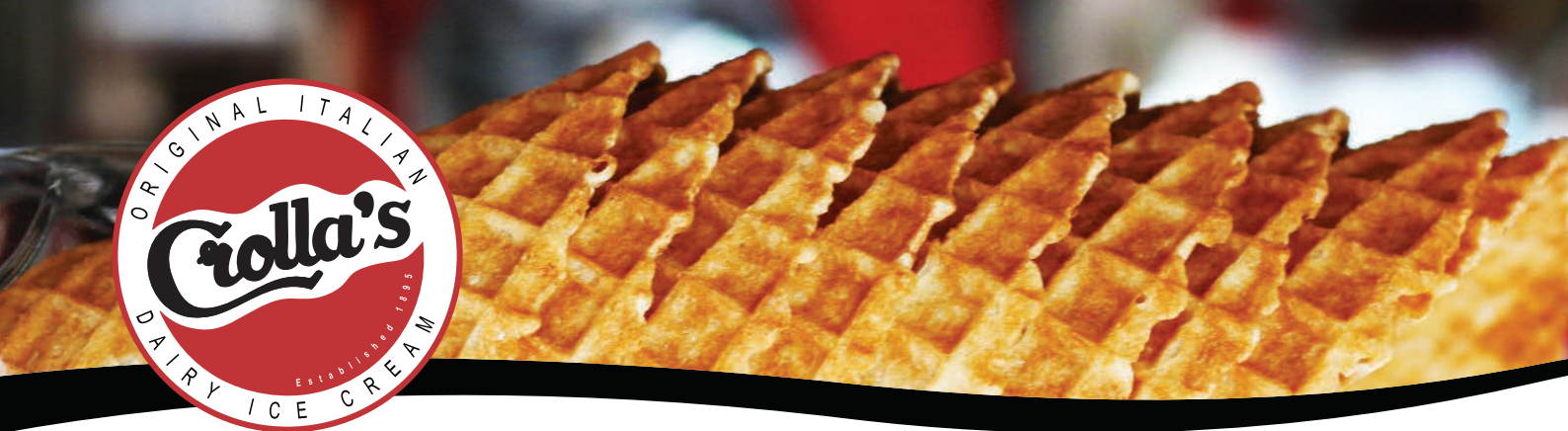


Popular with Parlours

Code	Product	Units/Kg
Waffles		
135	Belgian Waffles	30
Bako05	Waffle Mix	12.5kg
Puddings		
Sid003	Chocolate Fudge Brownie (GF) (v)	12
Sid159	IND Sticky Toffee Pudding (v)	12
Ald 01	Crollas Fudge Brownie Slab	108
Cookie Dough		
Bako02	Double Chocolate Cookie Pucks	90
Bako03	Milk Chocolate Cookie Pucks	90
Bako04	White Chocolate Cookie Pucks	90
Bako06	Milk Chocolate Cookie Dough (Bucket)	5kg
Cro 36	Crolla Milk Puck Cookie Dough	90
Cro 37	Crolla White Puck Cookie Dough	90
Tub 01	Chocolate Fudge	45
Tub 02	Red Velvet	45
Tub 03	Strawberry & Cream	45
Tub 04	Blue Bubblegum	45
Tub 05	Chocolate Orange	45
Tub 06	Biscoff	45
Churros		
141	Churro Sticks	2 x 2kg
146	Chocolate Churros	1.4kg
147	Caramel Churros	1.4kg
149	Ringed Churros (Garcia)	5kg

Items marked (v) are suitable for vegetarians.
All products listed here are vatable.





Tubs & Packaging *

Code	Product	Units
Tubs		
794	8B 100ml Waxed Fruit Cup	100
793	10MG 160ml Waxed Fruit Cup	100
789	M2 230ml Waxed Fruit Cup	100
798	M3 260ml Waxed Fruit Cup	100
781	M4 500ml Waxed Fruit Cup	100
226	High Ball Containers	80
291	Containers 4 Lt with Lids	1
292	Containers 2 Lt with Lids	1
293	Containers 1 Lt with Lids	252
294	Containers 1/2 Lt with Lids 100	100
565	8oz Cups clear	100
Lids for Tubs		
799	Lid for 8B 100ml	100
796	Lid for 10mg 160ml	100
797	Lid for M2/M3 230/260ml	100
780	Lid or M4 500ml	100
Packaging		
270	Greaseproof Paper Small	Pack
271	Greaseproof Paper Large	Pack
Fra115	Pink Sweet Box (7")	90
Spoons		
269	Spoons Small Bio	1kg
TAS01	Large Sundae Spoons	1kg

Cones & Wafers

Code	Product	Units
Traditional Cones		
214	Teddy Bear Cones	175
253	Cones Twin Top	189
252	Cones Giant Red Fiesta	360
Waffle Cones		
WAV 03	Small Waffle Cone	234
WAV 01	Medium Waffle Cone	195
WAV 06	Large Waffle Cones	189
PER01	Tall Waffle Cone	180
PER02	Tall Waffle Cone	300
PER04	Medium Waffle Cone	144
PER05	Large Waffle Cone	189
Chocolate Dipped Cones *		
Cat 16	Sprinkled Waffle Cone	90
Cat 08	Bubblegum Waffle Cone	90
Cat 09	Salted Caramel Dipped Cones	90
WAV 02	Small Chocolate Waffle Cone	132
WAV 04	Medium Chocolate Waffle Cone	110
WAV 07	Tall Chocolate Waffle Cone	168
Wafers		
250	Plain Wafers	650
Flor01	Fan Wafers Florentine	400
248	Teddy Bear Wafers	400
ROSSI	Rossini Curls	280
256	Nougats	60
258	Oysters	36
242	Retail Oysters	6
234	Waffle Baskets	74





Toppings

Code	Product	Units/Kg
243	Milk Chocolate Buttons *	5kg
241	Coloured Sugar Strands	1kg
260	Light Vermicelli	1kg
257	Smarties *	3kg
467	Tablet Squares	1kg
450	Nibbed Nuts (Peanuts) *	2kg
440	Honeycomb Pieces *	1kg
272	Snowballs Tunnocks	36
273	Real Chocolate Chips *	1kg
477	Micro Marshmallows *	1kg
1030	Milk Chocolate Shavings *	3kg
1031	Dark Chocolate Shavings *	3kg
443	Fudge Pieces *	1kg
452	Toffee Pieces *	1kg
189	Mini Meringues *	1kg
HB 25	White Blossom Curls *	1kg
HB 26	Milk Chocolate Curls *	1kg
HB 41	Caramel Curls *	1kg
HB 50	Milk Blossom Curls	4kg
HB 51	White Blossom Curls *	4kg
233	Mini Smarties *	2.5kg
464	Oreo Pieces *	1kg
275	Lessiters Chocolate Flakes *	140
254	Fudgery Do Fingers *	144
HB 12	White Chocolate Shavings	3kg

Items marked (v) are suitable for vegetarians.

All products marked * are vatable.





Sauces

Code	Product	Units
196	Bubblegum Topping Syrup	625g
262	Toffee Topping Syrup	625g
263	Chocolate Topping Syrup	625g
264	Strawberry Topping Syrup	625g
265	Raspberry Topping Syrup	625g
267	Lime Topping Syrup	625g
247	Raspberry Syrup	12 btl
NIC 07	Sparkling Unicorn	500g
NIC 08	Cookie Dough	500g
SKU011	Tasty Mint Sauce	625g
SKU012	Chocolate & Orange Sauce	625g
SKU013	Salted Caramel Sauce	625g

Joy Gelato

HB 02	Joy Caramel Topping Sauce	1kg
HB 03	Joy Chocolate Topping Sauce	1kg
HB 04	Joy Strawberry Topping Sauce	1kg
HB 06	Joy Tropical Topping Sauce	1kg
HB 14	Joy Mango Topping Sauce	1kg
HB 15	Joy Raspberry Topping Sauce	1kg
HB 24	Crolla White Chocolate Sauce	1kg
HB 42	Crolla Kinder Sauce	1kg
FRAN44	Fab Mint Topping Sauce	1kg
Mar-05	Hot Chocolate Fudge Sauce	3kg
Fran08	Noccialatta Ice	5kg

Lotus Biscoff

Lot 01	Biscoff Topping Sauce	1kg
Lot 02	Biscoff Spread	1.6kg
Lot 03	Biscoff Crumb	750g

Cherries

Tosc08	Toschi Amarena Cherries	1kg
--------	-------------------------	-----

6kg Range

Code	Product	Kg
444	Toffee Sauce	6kg
447	Raspberry Sauce	6kg
448	Bubblegum Sauce	6kg
449	Strawberry Sauce	6kg
459	Chocolate Sauce	6kg
268	Raspberry Syrup (Real)	6kg
SKU001	Salted Caramel	6kg
SKU002	Chocolate & Orange	6kg
SKU003	Tasty Mint	6kg

NIC

NIC03	Nic Toffee Sauce	1.2kg
NIC04	Nic Salted Caramel Sauce	1.2kg

Slush

Simp06	Crolla's Iron Brew	5lt
Simp07	Crolla's Dark Cola	5lt
Simp08	Crolla's Energy	5lt
Simp43	Crolla's Purple Grape	5lt
Simp73	Crolla's Green Sour Apple	5lt
Simp76	Crolla's Red Strawberry	5lt
Simp77	Crolla's Blue Raspberry	5lt
Simp78	Crolla's Kola Cube	5lt
Simp79	Crolla's Pink Bubblegum	5lt
Simp57	Slush Base Mix	5lt

Scoops & Utensils *

295	Size 20 Ice Cream Scoops
296	Size 30 Ice Cream Scoops
301	Eutectic Scoop Size 20
302	Eutectic Scoop Size 30
303	Plastic Handled Size 20 scoop
304	Plastic Handled Size 30 scoop
287	Ice Cream Spatula
527	Ice Cream Spatula Small
555	Sterilising powder





Milkshake

Code	Product	Units
TOSC01	Banana	1ltr
TOSC02	Chocolate	1ltr
TOSC03	Coconut	1ltr
TOSC04	Hazelnut	1ltr
TOSC05	Mango	1ltr
TOSC06	Mint	1ltr
TOSC10	Raspberry	1ltr
TOSC11	Strawberry	1ltr
TOSC12	Vanilla	1ltr
TOSC15	Caramel	1ltr

Cups & Straws *

Code	Product	Units
Sol12	12oz Clear Cup	50
Sol16	16oz Clear Cup	50
569	20oz Clear Cup	50
Solo12d	Lids for 12oz Dome	100
Solo16d	Lids for 12, 16, 20oz Dome	100
478	Paper Straws 10mm	200

New Cone Dispensers

Small	£95.00
Large	£115.00

All products marked * are vatable.



All products marked * are vatable.



Specialty Ice Creams

Freezer to table

Simplicity. Just straight from the freezer to your customer's table.



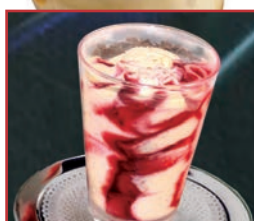
Code: 113
Chocolate Sundae
8 Units



Code: 114
Strawberry Sundae
8 Units



Code: 076
Caprizzo Bianco
12 Units



Code: 118
Strawberry Cheesecake
8 Units



Code: 066
White Chocolate/ Caramel Truffle
8 Units



Code: 074
Tartufo Chocolate
12 Units



Code: 075
Tartufo Mint
12 Units



Code: 117
After Dinner Mint
8 Units



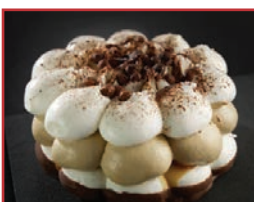
Code: 115
Caramel Shortcake
8 Units



Code: 714
Semifreddo Torroncino
12 Units



Code: 108
Coconut Surprise
8 Units



Code: 641
Fantastica
6 Units



Code: 731
Cassata Bindi
16 Units



Code: 092
Tiramisu Cup
8 Units



Code: 102
Limoncello Flute
8 Units



Code: 103
Salted Caramel Flute
8 Units



Code: 712
Tartufo Limoncello
12 Unitse



Code: 734
Tartufo Classico
12 Units



Code: 081
Coppa Mango
8 Units



Code: 088
Toffee Twilight (Glass)
8 Units



Code: 089
Strawberry Flute (Glass)
8 Units



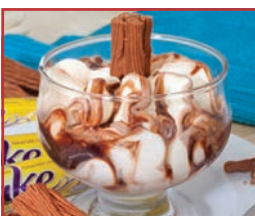
Code: 056
Coppa Fruta Del Bosque
8 Units



Code: 644
Cookies & Cream
8 Units



Code: 059
Coppa Chocolate Mousse
6 Units



Code: 096
Snowflake
8 Units



Code: 097
Ferrero Rochella (Glass)
8 Units



Code: 112
Honey Pot
6 Units

All products listed here are vatable.

Ask a member of our team about our free dessert menus.





Real Fruit Skins



Code: 100
**Orange Givres
(Skins)**
6 Units



Code: 101
**Lemon Givres
(Skins)**
6 Units



Code: 109
Coconut Shells
8 Units

Indian Desserts



Code: 080
Malai Kulfi
12 Units



Code: 083
Mango Kulfi
12 Units



Code: 084
Pistachio Kulfi
12 Units

Childrens' Desserts



Code: 638
Punky
12 Units



Code: 639
Kuaky (Chocolate)
12 Units



Code: 636
Vacky
12 Units



Code: 637
Friky (Strawberry)
12 Units



Code: 645
Leo the Lion
12 Units

All products listed here are vatable.





Cakes & Desserts

Gateaux and Pies

Code	Product	Portions
183	Apple Pie	14
160	Lemon Mallow Pie	14
sid662	Caramel Granny Apple (v)	12
142	Chocolate Fudge Cake (v)	16
sid152	Carrot Cake (v)	14
sid177	Dime Bar Cake	14
145	Red Velvet Fudge Cake	12
684	Tiramisu Tondo	12
154	Red Velvet Chocolate Cake	14
Hill 01	Black Forest Gateau	16
Wald 08	Mississippi Mid Pie	16

Tray Bakes & Pudding

Code	Product	Units
310	Caramel Shortcake Squares	24
311	White Chocolate Caramel Squares	24
sid003	GF Chocolate Brownie (v)	12
744	Profiterole Scuro Bianco	12
747	Profiterole Scuro	12
sid159	Sticky Toffee Pudding (v)	12
158	Sticky Toffee Squares (v)	16
ald01	Crolla Chocolate Fudge Brownie Slab	108
191	Vanilla Slices	24
683	Tiramisu Dish	12

Vegan

Code	Product	Units
VEG 04	Salted Caramel Brownie	30
VEG 03	Mango & Coconut	24





Cheesecake

Code	Product	Portions
sid176	New York Cheesecake (gf) (v)	12
151	Belgian Chocolate Cheesecake	14
154	Red Velvet Cheesecake	14
153	Millionaires Cheesecake	14
WIN 32	White Chocolate & Strawberry Cheesecake	16
Non 01	Lotus Biscoff Cheesecake	12
Non 05	Cookies & Cream Cheesecake	12
Non 14	Kinder Cheesecake	12
Non 15	Ferrero Cheesecake	12
Non 16	Nutella Cheesecake	12

Code	Product	Portions
Wald 01	Banoffee Cheesecake	16
Wald 02	Caramel Crunch Cheesecake	16
Wald 03	American Toffee Cheesecake	16
Wald 04	Chocolate Cheesecake	14
Wald 05	Toffee 'n' Honeycomb Cheesecake	16
Wald 06	New York Cheesecake	16
Wald 07	Millionaire Salted Caramel Cheesecake	16

All products marked (v) are suitable for vegetarians.

All products marked (gf) are gluten free.

All products are VAT free.





Buffet Range

Code	Product	Portions
138	Apple Crumble (v)	14
Copp10	Mandarin Cheesecake	14
Copp11	Strawberry Cheesecake	14
185	Double Chocolate Gateau (v)	18
186	Banoffee Gateau (v)	18
132	Peach Melba Torte	16
133	Chocolate Cream Torte (v)	16
Hill 02	Profiteroles with Choc Sauce	5x374G
Hill 01	Black Forest Gateau	16
Mad 06	Choc Fudge Cake WHOLE	16
Copp05	Almond Cream Cake	12



All products here are non-vatable.





Bulk Ice Cream Range

Code	Product	Litres	Price
------	---------	--------	-------

Dairy Bulk

354	10.0 Litre (Dairy Ice Cream) (v)	10	
351	13 Litre (Dairy Ice Cream) (3.5gal) (v)	13	

Half Dairy Bulk

809	13 Litre (Half Dairy Ice Cream) (v)	13	
801	22.75 Litre (Half Dairy Ice Cream) (v)	22.75	

10 Litre

357	Vanilla (Half Dairy Ice Cream) (v)	10	
931	Strawberry (Half Dairy Ice Cream) (v)	10	
932	Chocolate (Half Dairy Ice Cream) (v)	10	
933	Toffee (Half Dairy Ice Cream) (v)	10	
935	Raspberry Ripple (Half Dairy Ice Cream) (v)	10	
936	Blue Bubblegum (Half Dairy Ice Cream) (v)	10	
940	Banana (Half Dairy Ice Cream) (v)	10	
938	Iron Brew (Half Dairy Ice Cream) (v)	10	
930	Mint Chip (Half Dairy Ice Cream) (v)	10	

All products marked (v) are suitable for vegetarians.

All products here are vatable.



Fresh Crolla Mix & Long Life Mix

Code Product Litres

Fresh

600 Mix Dairy Store 4.55
from 1C to 6C

Non Dairy UHT

711 Mr Sunshine 12x1lt
Creamy UHT Mix

Code Product Litres

Cafe Dairy UHT

612 1 Litre Crolla Dairy 1
UHT Mix
650 5 Litre Crolla Dairy 1x5lt
UHT Mix
651 10 Litre Crolla Dairy 1x10lt
UHT Mix

Retail Range

Code Product Case

Spoon in the Lid

374 Vanilla 12x120ml
375 Mint Choc Chip 12x120ml
378 Raspberry Ripple 12x120ml
379 Choc Fudge Ripple 12x120ml
353 Cheeky Monkey 12x120ml
355 Caramel Shortcake 12x120ml
356 Strawberry 12x120ml
Cheesecake

500ml

370 Vanilla Dairy 6x500ml
371 Raspberry/
Ripple Dairy 6x500ml

Code Product Case Cost

500ml

370 Vanilla Dairy 6x500ml
371 Raspberry/
Ripple Dairy 6x500ml
370 Vanilla 6x500ml
371 Raspberry Ripple 6x500ml
366 Tablet (Scottish) 6x500ml
367 Sticky Toffee Ripple 6x500ml
368 Strawberry Ripple 6x500ml
369 Chocolate Fudge
Ripple 6x500ml
832 Mint Chocolate Chip 6x500ml
833 Cookies & Cream 6x500ml
834 Cheeky Monkey Tall 6x500ml
835 Strawberry
Cheesecake Tall 6x500ml





Code	Product	Case
Jimmy Gelato Retail		
510	Jimmy Gelato 1/2 Lt Vanilla	6x500ml
511	Jimmy Gelato 1/2 Lt Ras/Ripple	6x500ml
500	Jimmy Gelato 1 Lt Vanilla	3x1lt
501	Jimmy Gelato 1 Lt Rasp/Ripple	3x1lt

Traditional Vanilla		
373	Kiddicups (110ml) Vanilla	24x110ml
372	Vanilla 238ml Dairy	12x238ml
362	Vanilla 1 Litre Dairy	3x 1 litre
361	Vanilla 2 Litre Dairy Bulk	1x2 Litre

Code	Product	Units
Ice Lollies		
336	Super Cola	36
339	Bubble Gum	36
335	Apple Cider	24
337	Fizzy Lemonade	24
350	Orange Juice Bar	24
340	Wazzaaa	24
343	Strawberry Split	24
345	Bubblegum & Strawberry	24
349	Chico Clown Push up	24
338	Blue Raspberry	24
344	KBG Mint	12
347	KBG Chocolate	12
342	KBG Bubblegum	12
348	KBG Strawberry	12

All products are suitable for vegetarians.

All products here are vatable.





Terms of Business

The published prices are correct at the time of printing but may alter without notice. VAT will be charged at the standard rate where applicable.

PAYMENT

All products are sold as cash on delivery unless a credit agreement has been established. Credit terms are monthly. Failure to comply with these terms could result in no further deliveries and, in extreme cases, legal action.

ORDERS

Within our delivery catchment area there will be no minimum order required for delivery. However if you require a delivery outwith our delivery area a minimum order may be applicable. (Please call to find out our delivery areas).

DAMAGES AND SHORTAGES

Any damages or shortages must be notified to us within 24 hours of delivery. Please note that Credits or replacements will not be given until our Quality Control Department has inspected the returned goods.

AVAILABILITY

All products are subject to availability. Although we stock everything that is on this price list sometimes circumstances beyond our control may cause shortages.

The Crolla Ice Cream Company Ltd

Address: 48 Jessie Street
Polmadie, Glasgow
G42 0PG
Telephone: 0141 423 1161
Fax: 0141 423 2596
Email: sales@crollaicecream.co.uk
Website: www.crollaicecream.co.uk

If you have any dietary requirements or concerns regarding allergens, please do not hesitate to ask a member of our team.







CrollalceCream.co.uk